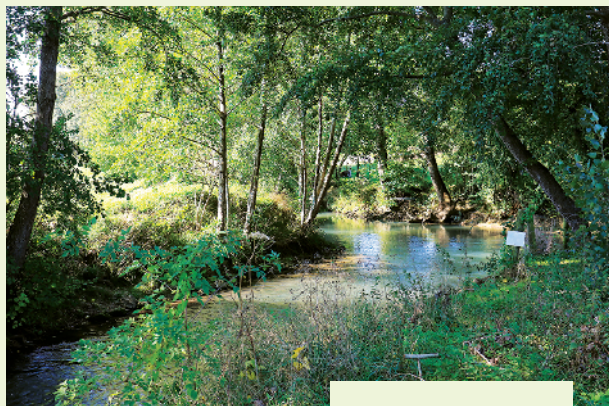


## The Grand-Morin river

The Grand-Morin river runs south of the Petit-Morin, after springing from the Marne department. It winds its way over 77km to Seine-et-Marne near Meilleray. It runs through several towns including La Ferté-Gaucher, Coulommiers and Crécy-la-Chapelle before joining the Marne in Condé-Sainte-Libiaire.

This river has been ranked as category 2 for fishing, from Esternay (in the Marne department) to its confluence. Until the early 20<sup>th</sup> century, the Grand-Morin was used for shipping upstream from Coulommiers to send cereals, wood and wine to Paris. At the time, it was dotted with water mills, some of which remain including the Moulin de Coude and Moulin Prémol. The valley boasts some remarkable scenery and a rich heritage, providing inspiration for several painters including Corot and Dunoyer-de-Segonzac.



The Grand Morin



Edition Provins Tourisme - Conception et réalisation : CreaClic 1 - 10/2022 - Informations susceptibles de modifications.



**Access:** La Ferté-Gaucher 20 km east of Coulommiers by the D934.

**Practical information:** parking, supermarket, all shops. Accessible from the Coulommiers SNCF station or bus line 17 from the "Chessy-La Ferté-Gaucher" station of the RER A.  
Elevation: total: 274 m. Min: 113m. Max: 184m

### The Hiker's Code of Conduct

- Do not leave the marked paths.
- If there are any doubts regarding which path to take, markings take precedence over the description.
- Respect nature and private property.
- Don't litter.
- Avoid routes during hunting season (check with the town halls or the Seine-et-Marne hunting federation).
- Close gates and fences after you.
- Whenever possible, remove any obstacles from the path.



PROVINS TOURISME  
entre Bassée, Montois et Morin

4 chemin de Villecran, 77160 PROVINS  
Tél. : 01 64 60 26 26 - [www.provins.net](http://www.provins.net)



## Hiking

in Provinois, Bassée-Montois and Morin

# LA FERTÉ-GAUCHER The Upper Grand-Morin Valley

This pleasant itinerary often takes you through woods, and to a lesser-known part of the Grand-Morin Valley, alternating hills and vales.

CIRCUIT N°  
**06**  
2 Morin



PROVINS TOURISME  
entre Bassée, Montois et Morin



## The Upper Grand-Morin Valley

- 1 Set out to the right from the Tourist Information Office, then turn left onto Rue de Paris. Bear right, cross Place Pasteur, pass through the Town Hall gateway and cross the garden. Follow Rue Ernest Delbet (D14) on your right for 1km.
- 2 Take the street on your left. It goes round the Coutran commandery, and becomes a field path. Go up on your right, take the next path left and at the pumping station, go down on your right.
- 3 Just outside Saint-Martin-des-Champs, take Grande Rue on your right. After the church, zigzag left then right. Continue on the path taking you through the fields. At the 90° turn, go straight ahead on the path, under the former railway bridge, turn left into the next path, then right to cross the Grand-Morin river. After 200m, bear left. The path takes you over the brook, and becomes a road. It crosses another road and leads to the mill known as Moulin de La Fosse. Take the path on your right to go round it.
- 4 Cross over the D934 (take care!). Once you reach the hamlet Bellevue, go up the street to your left to the cemetery. When the street turns, take the path opposite for 2km. Go down the next path on the left. It crosses a brook then takes you up to the hamlet Moutils. Turn into the D934 on your left for 70m then follow the road on your right. It becomes a path that goes up then down through the woods.
- 5 At the fork, bear right taking the hairpin bend. The path leads to the hamlet Cormeaux. Take the road on the left and cross the Grand-Morin river, then go along the former railway track (Vélorail). Go up to the hamlet Montvinot then down the left path, then the one on your right for 1.6km.
- 6 Climb up the path on your right then go down on the left towards Saint-Martin-des-Champs. Take Rue Henriette Lecocq, pass between the Town Hall and the church, cross Grande Rue and continue along Rue des Vieilleux. It becomes a path. Turn right at the junction, then go down on the left. Follow the D14 on your right until you reach marker 2 of the outward journey.
- 2 Retrace your steps to get back to the Tourist Information Office.



The trail markings on this route are installed and maintained by 250 footpath wardens from the Seine-et-Marne departmental hiking committee. (Codérando 77). It is part of a network of 4,500 km of walking and hiking trails in the department. If you notice any irregularities during your hikes (errors or lack of markings, poor maintenance, illegal waste disposal), please inform Codérando 77 via the website <http://sentinelles.sportsdenature.fr/> by selecting the "hiking" activity.